



Extended Pricing Integration User Guide

Version 18.2 for Dynamics GP 18.2

Document version: 18

Date: April 1st, 2020

Contents

CONTENTS	2
EXTENDED PRICING INTEGRATION	3
PRICING DATA IMPORT	3
1. IMPORT PRICING WINDOW	3
1.1 <i>Importing Pricing Data</i>	4
1.2 <i>Flat File Settings</i>	5
1.3 <i>Flat File Formatting</i>	9
PRICING DATA EXPORT	10
2. EXCEL FILE TEMPLATE MAINTENANCE WINDOW.....	10
2.1 <i>Setting Up Excel Template IDs</i>	10
3. EXTENDED PRICING EXPORT WIZARD	11
3.1 <i>Using the Extended Pricing Export Wizard</i>	12
3.2 SELECT EXCEL FILE TYPE SCREEN.....	12
3.2.1 <i>Selecting an Excel File Template</i>	12
3.3 SELECT EXTENDED PRICES SCREEN	13
3.3.1 <i>Selecting Extended Prices</i>	13
3.4 SELECT EXCEL WORKBOOK SCREEN	14
3.4.1 <i>Selecting an Excel Workbook</i>	14
3.5 SELECT EXCEL WORKSHEET SCREEN.....	15
3.5.1 <i>Selecting an Excel Worksheet screen</i>	15
3.6 COMPLETING EXPORT SCREEN	16
3.6.1 <i>Using the Completing Export Screen</i>	16
3.7 COMPLETING EXPORT SCREEN 2	16
3.7.1 <i>Using the Completing Export screen 2</i>	16
3.8 EXPORT COMPLETED SCREEN	17
3.8.1 <i>Using the Export Completed Screen</i>	17
APPENDIX A.....	18
EXTENDED PRICING INTEGRATION – ACCESS TO WINDOWS	18
APPENDIX B	19
EXTENDED PRICING INTEGRATION - REPORTS	19
APPENDIX C.....	20
ABOUT TRINITY	20

Extended Pricing Integration

Microsoft Dynamics™ GP Extended Pricing provides an alternative to the standard Microsoft Dynamics™ GP pricing, giving you the facility to set up flexible pricing structures and customized pricing arrangements through price sheets, price books, and price groups.

The Trinity Extended Pricing Integration module facilitates the import of data into Microsoft Dynamics™ GP Extended Pricing. For example, you may wish to transfer pricing structures from an existing system into Microsoft Dynamics™ GP. The Extended Pricing Integration module enables you to retain the integrity of any pricing data that you have set up externally to Microsoft Dynamics™ GP by importing data from flat files (.csv files) that could be created, for example, in Excel.

The Extended Pricing Export Wizard provides additional functionality to enable you to export any extended prices you have set up to an Excel spreadsheet.

The main features of the Extended Pricing Integration module are:

- The facility to import pricing data to create price sheets and price books
- The facility to import pricing data to assign price sheets to price books
- The facility to import pricing data to assign price sheets and price books to customers and prospects
- The facility to import pricing data to assign items and groups to price sheets
- An export wizard to enable the exporting of extended prices to an Excel spreadsheet

Before you attempt to utilize the Extended Pricing Integration functionality, it is recommended to refer to the Flat File Settings and Flat File Formatting sections.

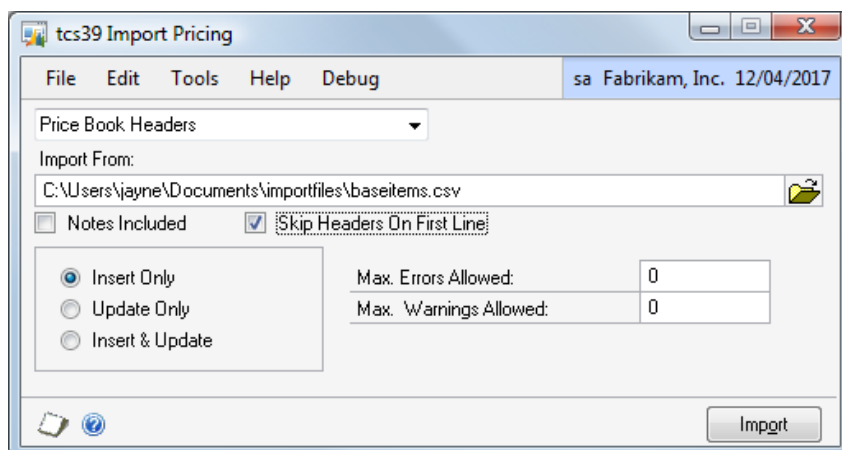
Pricing Data Import

1. Import Pricing window

Tools >> Routines >> Trinity >> Extended Pricing Integration >> Import Pricing

Use the Import Pricing window to:

- Import pricing data to create price sheets and price books
- Import pricing data to assign price sheets to price books
- Import pricing data to assign price sheets and price books to customers and prospects
- Import pricing data to assign items and groups to price sheets



1.1 Importing Pricing Data

To import pricing data in the Import Pricing window:

1. Select the pricing data type that you want to import from the drop-down menu. See Flat File Settings (1.2) for further details of import types.

Note that the import you select must be validated by Microsoft Dynamics™ GP. For example, you cannot assign a price sheet to a price book, where you have not already created the price sheet.

2. Enter the file that you want to import or use the Folder icon to browse to the required .csv file on your system.
3. You can select to include notes with the imported .csv file by clicking the Notes Included checkbox.

Note that this option is only available for certain import types, see Flat File Settings (1.2) for further details of imports where notes may be included.

4. You can omit the first line of the spreadsheet if it has been used for column headings. To do this, select Skip Headers on First Line.
5. Click to select whether to Insert Only, Update Only, or Insert and Update the data on the imported .csv file. These options identify the import routine that you want to perform. For example, if you select Insert Only, then new records (such as a new price sheet, or the new assignment of a price sheet to a customer) are imported. Existing records (such as a price sheet that already exists on your system) would not be imported and would result in an error.

Option	New Record	Existing Record
Insert Only	Updated	Produce error
Update Only	Produce error	Updated
Insert and Update	Updated	Updated

6. Under Max. Errors Allowed, enter the maximum number of errors that you want to be permitted before the import is stopped.

Errors result when the import cannot validate data in a .csv file. These errors could be the result of the formatting of a field being wrong (see 1.3) or where incorrect values have been entered (for example, an invalid item number is contained in the file for import). Any errors detected in the import are displayed in the errors report (see below). Records containing errors **are not** imported.

If you set a value in Max. Errors Allowed and that value is reached during the import, the import is stopped. All records up to that point are imported.

Note that if no quantity is entered, the import is processed regardless of the number of errors.

7. Under Max. Warnings Allowed enter the maximum number of warnings that you want to be permitted before the import is stopped.

Warnings result when the import finds records that can be imported but may result in problematic data, for example, where the net price is set to zero. Any warnings detected in the import are displayed in the errors report (see below). Records containing warnings are imported.

If you set a value in Max. Warnings Allowed and that value is reached during the import, the import is stopped. All records up to that point are imported.

Note that if no quantity is entered, the import is processed regardless of the number of warnings.

8. Click Import to import the selected .csv file.

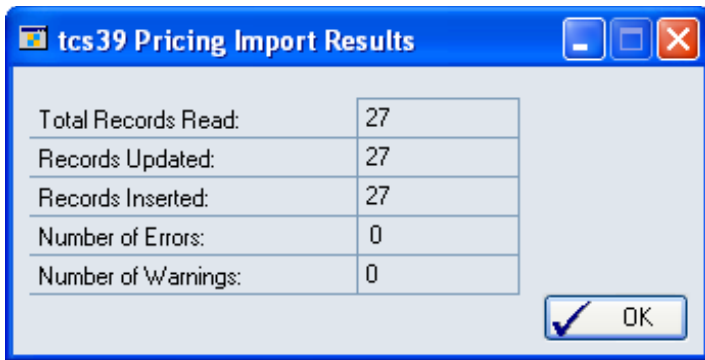
Note that you get an automatic warning if you attempt to import a flat file with an incorrect number of fields.

If there are errors in the import, then a dialogue box is displayed with the option to print an error report. To print an error report, click Yes.

```

System:      17/11/2004  15:45:54      Fabrikam, Inc.      Page:  1
User Date:   12/04/2007      PRICE IMPORT - PRICE BOOK LINK ERRORS      User ID:  sa
Price Book Code  Debtor/Prospect Code      Error
BASEBOOK        AARONFIT0001              This Debtor is already assigned to Price Book PREMIER
BASEBOOK        ADAMPARK0001              This Debtor is already assigned to Price Book PREMIER
BASEBOOK        AMERICAN0003              Debtor not found
    
```

9. When the import has been processed, the Pricing Import Results window is displayed. Details of the records imported are displayed along with details of errors and warnings encountered.



10. Click OK to close the Pricing Import Results window.

1.2 Flat File Settings

The import process requires that the exact number of fields are present in the csv. file that you are importing. If an incorrect number of fields are present, then this is detected by the import, and a warning is given. The import is not processed until you amend the .csv file or the import type that you have selected.

The fields required in flat files to import are dependent upon the type option that you select in the Import Pricing window. For example, if you select to import Price Book Headers, the .csv file should contain the fields Price Book Code, Price Book Description, and the optional field Notes (if you want to import notes, you would need to select the Notes Included option - see 1.1).

Price Book Code	Price Book Description	Notes
NEWPRICES	New price book	Notes (optional)

Full details of the fields required for each import type are displayed in the table below. Note that each field requires specific formatting to be in place for the import to function - see 1.3 for further details.

Import Type	Action	Required Fields
Price Book Headers	Create Price Book	Price Book Code Price Book Description Notes (optional)
Customer Price Book Links	Assign Price Book to Customer	Price Book Code Customer Code
Prospect Price Book Links	Assign Price Book to Prospect	Price Book Code Prospect Code
Price Sheet Headers	Create Price Sheet	Price Sheet Code Price Sheet Description Base Sheet Net Price Only Active Flag Start Date End Date Currency ID (if the company/system is multi-currency) Notes (optional)
Promotion Price Sheet Headers	Create Promotional Price Sheet	Price Sheet Code Price Sheet Description Base Sheet Net Price Only Active Flag Start Date End Date Currency ID (if the company/system is multi-currency) Notes (optional)
Price Sheet Price Book Links	Assign Price Sheet to a Price Book	Price Sheet Code Price Book Code
Price Sheet Customer Links	Assign Price Sheet to Customer	Price Sheet Code Customer Code
Price Sheet Prospect Links	Assign Price Sheet to Prospect	Price Sheet Code Prospect Code
Base Price Sheet Items	Assign Item to Base Price Sheet	Price Sheet Code Item Number Unit of Measure Breakpoint Pricing From Qty To Qty Based on U of M Net Price

Base Cost Sheet Items	Assign Item to Base Cost Sheet	Price Sheet Code Item Number Unit of Measure Breakpoint Pricing From Qty To Qty Based on U of M Net Price
Base Price Sheet Groups	Assign Groups to Base Price Sheet	Cost Sheet Code Group Code Unit of Measure Breakpoint Pricing From Qty To Qty Based on U of M Net Price
Base Cost Sheet Groups	Assign Groups to Base Cost Sheet	Cost Sheet Code Group Code Unit of Measure Breakpoint Pricing From Qty To Qty Based on U of M Net Price
Non-Base Price Sheet Items	Assign Items to Price Sheet	Price Sheet Code Item Number Unit of Measure Breakpoint Pricing From Qty To Qty Based on U of M Price Type Value
Non-Base Price Sheet Groups	Assign Groups to Price Sheet	Price Sheet Code Group Code Unit of Measure Breakpoint Pricing From Qty To Qty Based on U of M Price Type Value
Base Price Promotion Items	Assign Items to Base Promotion Sheet	Price Sheet Code Item Number Unit of Measure Breakpoint Pricing From Qty To Qty Based on U of M Value

Base Price Promotion Groups	Assign Groups to Base Promotion Sheet	Price Sheet Code Group Code Unit of Measure Breakpoint Pricing From Qty To Qty Based on U of M Value
Non-Base Promotion Items	Assign Items to Promotion Sheet	Price Sheet Code Item Number Unit of Measure Breakpoint Pricing From Qty To Qty Based on U of M Price/Promotion Type Value Promotional Level
Non-Base Promotion Groups	Assign Groups to Promotion Sheet	Price Sheet Code Group Code Unit of Measure Breakpoint Pricing From Qty To Qty Based on U of M Price/Promotion Type Value Promotional Level
Qty Free Promotion Items	Assign Items as Free Promotions to a Price Sheet	Price Sheet Code Item Number Unit of Measure From Qty To Qty Based on U of M Qty Free Promotion Level Free Item Number Free Item Unit of Measure Maximum quantity free
Qty Free Promotion Groups	Assign Groups as Free Promotions to a Price Sheet	Price Sheet Code Group Code Unit of Measure From Qty To Qty Based on U of M Qty Free Promotion Level Free Item Number Free Item Unit of Measure Maximum quantity free

1.3 Flat File Formatting

The Extended Pricing Integration module requires specific formatting to be applied to flat files to enable imports to be performed. The correct number of fields must be present for the type of import selected. If there is an incorrect number of fields, you receive a warning, and the import is not processed.

Errors are registered where the entry or formatting of the field is incorrect, or where the entry exceeds the specified numbers of characters.

Date fields must be formatted to the specifications below, or an error is registered.

A field requiring a Char entry can be any alphanumeric combination. Fields with the length 19.5 represent quantity values. The primary value (i.e., dollars) may be up to 19 numeric characters long, and the secondary value (i.e., cents) may be up to five characters long.

If you set breakpoint pricing to **N**, you should enter values of 0.

Field	Entry Formatting	Length	Example
Active Flag	Y or N (uppercase)	1	Y
Based on U of M	Char	8	EACH
Base Sheet	Y or N (uppercase)	1	Y
Breakpoint Pricing	Y or N (uppercase)	1	Y
Currency ID	Char	15	Z-US\$
Customer Code	Char	15	ABLE001
End Date	DD/MM/YYYY	8	18/01/2002
Free Item Number	Char	15	100XLG
Free Item Unit of Measure	Char	8	EACH
From Qty	Numeric	19.5	240.05
Group Code	Char	30	PROMO
Item Number	Char	30	100XLG
Net Price	Numeric	19.5	240.05
Net Price Only	Y or N (uppercase)	1	Y
Notes	Text	200	Optional
Price Book Code	Char	15	BASEBOOK
Price Book Description	Char	50	Base prices
Price Type	N - Net Price P - Percentage Off V - Value Off U - Cost Uplift Value T - Cost Uplift Percent	1	N
Price/Promotion Type	N - Net Price P - Percentage Off V - Value Off Q - Quantity Type	1	N
Promotion Level	S - Sheet C - Customer Book B - Base Book	1	S
Prospect code	Char	15	ABLE001
Start Date	DD/MM/YYYY	8	18/01/2002
To Quantity	Numeric	19.5	240.05
Unit of Measure	Char	8	EACH
Value	Numeric	19.5	240.05

Pricing Data Export

The Extended Pricing Export Wizard provides the functionality to export prices from Microsoft Dynamics™ GP to an Excel spreadsheet. Use the Excel File Template Maintenance window to set up templates for the price types that you want to export.

If you intend to reimport prices after they have been exported, then you should ensure that the map to fields in the Excel File Template Maintenance window correlates with the specification on the selected file type (see Flat File Settings). The exported file is to be saved as a .csv file before it can be reimported. If Item and Price Sheet Description columns are included in the export, these must be deleted before the data can be reimported.

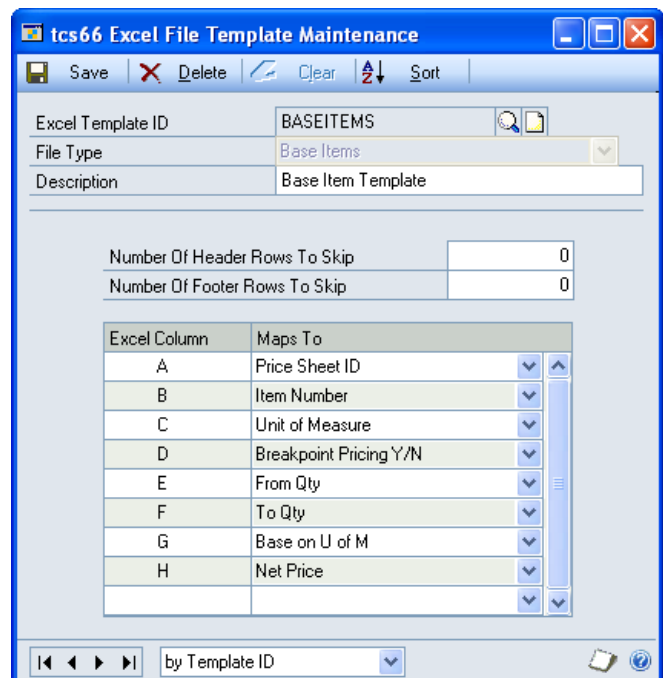
2. Excel File Template Maintenance Window

Tools >> Routines >> Trinity >> Extended Pricing Integration >> Export Template Maintenance

Use the Excel File Template Maintenance window to:

- Set up Excel template IDs to enable exporting of prices

Note that you must set up templates in this window before exporting prices.



2.1 Setting Up Excel Template IDs

To set up Excel template IDs in the Excel File Template Maintenance window:

1. Enter an excel template ID.
If you are maintaining a template ID, you can select one using the lookup.
2. Select a file type from the drop-down menu. The file type selected is specific to the type of prices you want to export. For example, if you want to export prices of items on the base price book, you would select Base Items.

The following file types are available for export:

- Base Items
- Base Groups
- Base Cost Items
- Base Cost Groups
- Non-base Items
- Non-base Groups
- Base Promotion Items
- Base Promotion Groups

- Non-base Promotion Items
 - Non-base Promotion Groups
3. Enter a description for the excel template ID.
 4. In the Number Of Header Rows To Skip and Number Of Footer Rows To Skip fields, you can enter the number of rows that you do not want to be included in the import. This window is for export purposes only, so the fields should be left set to 0.
 5. In the scrolling window, you should set how Excel columns map to Microsoft Dynamics™ GP fields for the excel template ID. From the drop-down menus, you can select options based on the file type selected.

For each option, you should enter an Excel column, for example, A, B, or C. When you have entered a column, select which Microsoft Dynamics™ GP field this column will be mapped to from the drop-down menu. The entered Excel column will contain data relating to the selected Map To option when you export prices.

Excel Column	Maps To
A	Price Sheet ID
B	Item Number
C	Unit of Measure
D	Breakpoint Pricing Y/N
E	Base on U of M
F	From Qty
G	To Qty
H	Net Price

Note that you must select an Excel column for all displayed map to options.

6. Click Save to save the excel template ID.

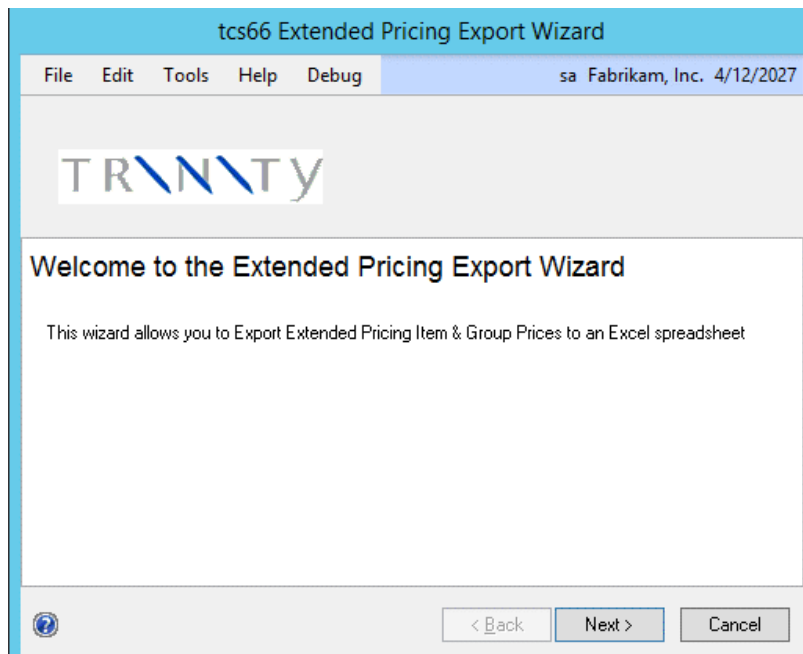
Note that you can click Delete to delete an excel template ID.

3. Extended Pricing Export Wizard

Tools >> Routines >> Trinity >> Extended Pricing Integration >> Export Wizard

Use the Extended Pricing Export Wizard to:

- Export extended pricing data



Errors could result if Excel is not closed when you are using the Extended Pricing Export wizard.

3.1 Using the Extended Pricing Export Wizard

1. Click the Next button to display the next window

Note that you can click Cancel on this or any other Extended Pricing Export Wizard screen to close the Extended Pricing Export Wizard.

Note also that you can click the Back button on any other Extended Pricing Export Wizard screen to return to the previous screen.

3.2 Select Excel File Type Screen

Excel Template ID	File Type
TEST	Non-base Items
	non base

3.2.1 Selecting an Excel File Template

1. Enter the excel template ID (set up in the Excel File Template Maintenance window) on which you want to base the import, or select one using the lookup.

Note that if you select a template where all the fields have not been mapped, then an error message is displayed.

2. The file type is displayed by default. Click Next.

3.3 Select Extended Prices Screen

3.3.1 Selecting Extended Prices

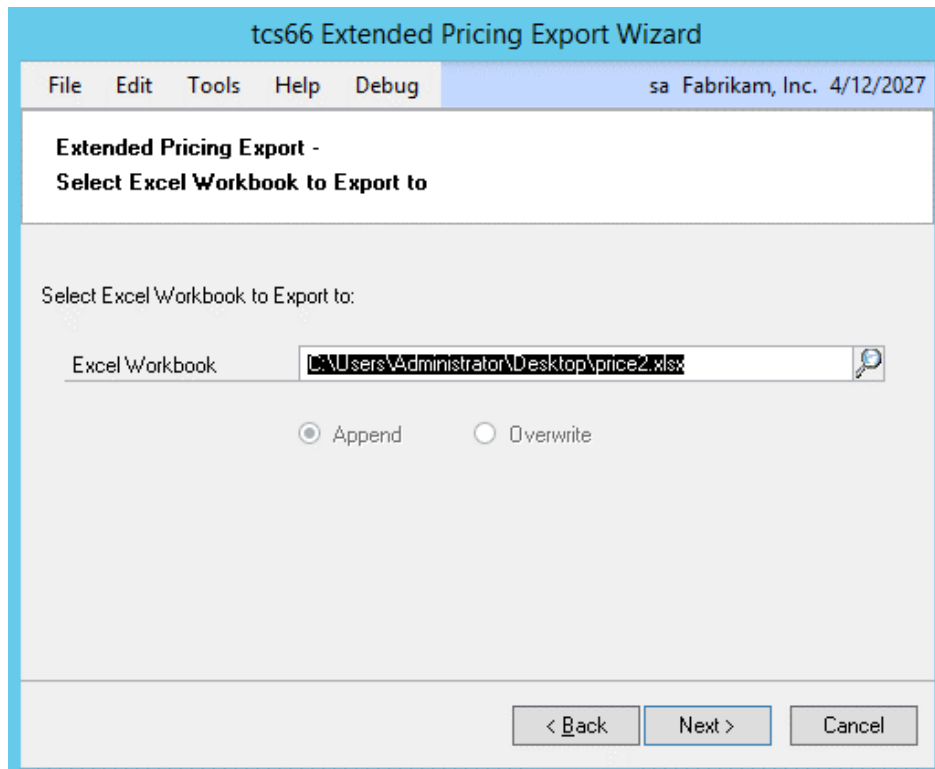
1. All is selected by default for each range type. To select defined ranges, click From and enter from and to values or select them using the lookups.

Note that if the file type assigned to the selected Excel template ID is base, base cost, or base promotion prices, then the book range defaults to the BASEBOOK or BASECOSTBOOK.

If the assigned file type is associated with items, then the group range option on this screen is not available. If the assigned file type is associated with groups, then the item range option on this screen is not available.

2. Click Next.

3.4 Select Excel Workbook Screen



3.4.1 Selecting an Excel Workbook

1. Enter the Excel file that you want to export or select one using the lookup.

Note that you cannot just enter the name of the file, you must also enter the system path to the file; for example, C:\TEMP\prices.xls. You can choose to select a workbook that has not yet been created - the workbook is created automatically during the export.

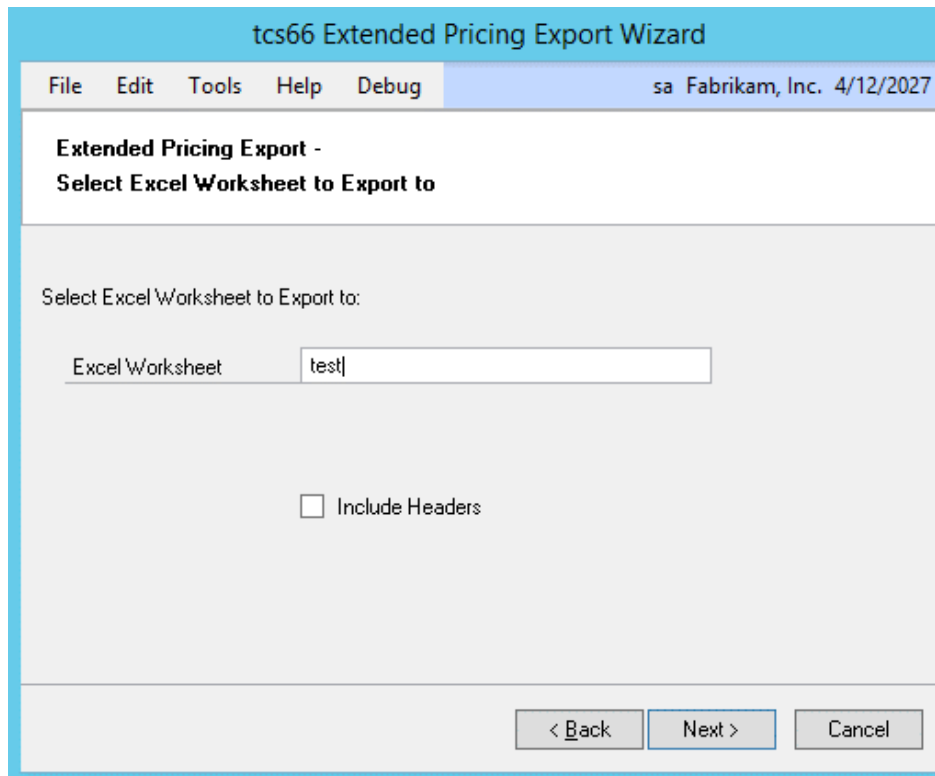
Also, note that you can only export .xls file types. You cannot export files that are currently open in Excel.

2. If you select a workbook that has already been created, you should also select whether to Append or Overwrite.

Append	Append exported details to the selected workbook
Overwrite	Overwrite the selected workbook with exported details

3. Click Next.

3.5 Select Excel Worksheet Screen



3.5.1 Selecting an Excel Worksheet screen

1. Enter a worksheet or select one from the drop-down menu. You can choose to enter a new worksheet - if you do so, the worksheet is automatically created during the export process. Do not call this worksheet Sheet 1 as errors could result.

Note that if you selected to overwrite an existing workbook in the previous window, you do not have the option to select a current worksheet from the drop-down menu. You should enter the name of a new worksheet.

Also, note that you cannot export to files that are currently open in Excel.

2. If you select a worksheet that has already been created, then you should also select whether to Append or Overwrite.

Append	Append exported details to the selected worksheet
Overwrite	Overwrite the selected worksheet with exported details

3. Select Include Headers if you would like the first row of the worksheet to be populated with column headings for your exported data.
4. Click Next.

3.6 Completing Export Screen

tcs66 Extended Pricing Export Wizard

File Edit Tools Help Debug sa Fabrikam, Inc. 4/12/2027

TRINITY

Completing the Extended Pricing Export Wizard

You have chosen to Export Prices for the following ranges:

Price Book ID range: PREMIER to PREMIER
 All Date's
 All Price Sheet ID's
 All Item Number's

< Back Next > Cancel

3.6.1 Using the Completing Export Screen

1. The range that you have selected to export is displayed.
2. Click Next.

3.7 Completing Export Screen 2

tcs66 Extended Pricing Export Wizard

File Edit Tools Help Debug sa Fabrikam, Inc. 4/12/2027

TRINITY

Completing the Extended Pricing Export Wizard

You have selected to Export Prices using the following Excel parameters:

Excel Template ID TEST

Excel Workbook C:\Users\Administrator\Desktop\price2.xlsx

Excel Worksheet test

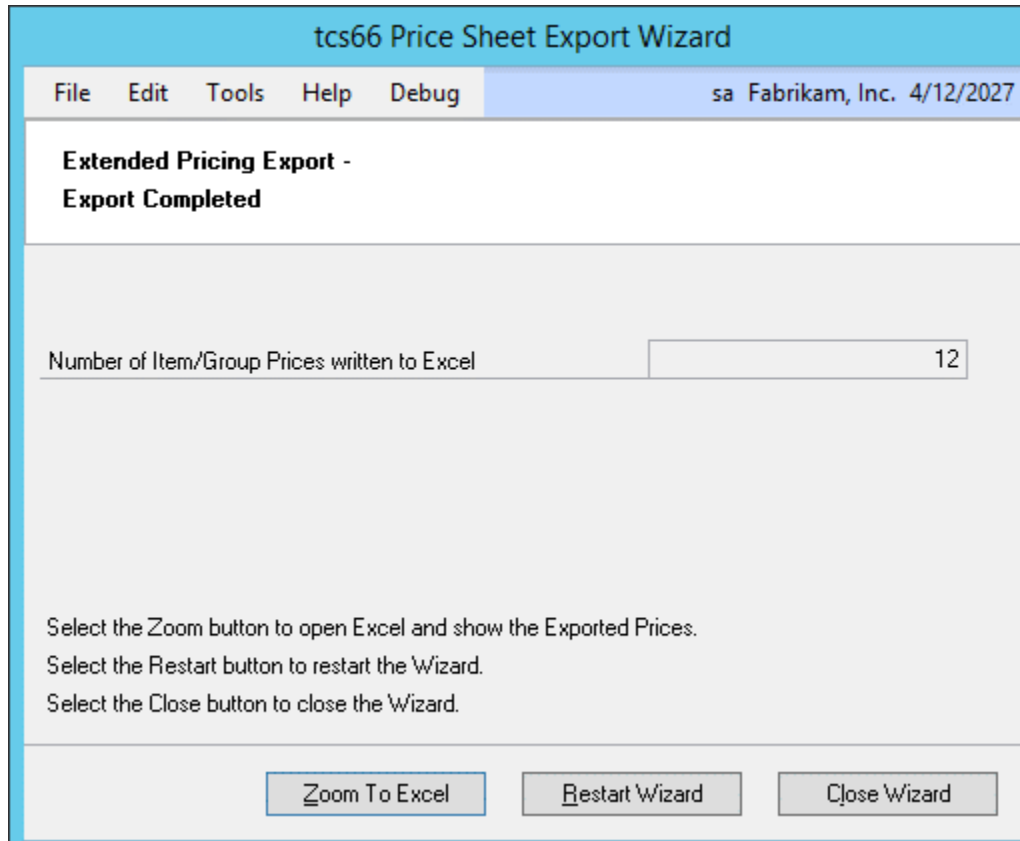
 When you choose Export, all Prices in range will be Exported.

< Back Export Cancel

3.7.1 Using the Completing Export screen 2

1. All Excel details that you have selected for the export are displayed.
2. Click Export.

3.8 Export Completed Screen





3.8.1 Using the Export Completed Screen

1. The number of prices exported is displayed.
2. Click Zoom To Excel to display the worksheet that has been exported.
3. Click Restart Wizard if you want to export more prices. Alternatively, click Close Wizard to close the wizard.

Appendix A

Extended Pricing Integration – Access to Windows

Window Name	 Menu Access	 Other Access
Excel File Template Maintenance	Tools >> Routines >> Trinity >> Extended Pricing Integration >> Export Template Maintenance	
Extended Pricing Export Wizard	Tools >> Routines >> Trinity >> Extended Pricing Integration >> Export Wizard	
Import Pricing	Tools >> Routines >> Trinity >> Extended Pricing Integration >> Import Pricing	

Appendix B

Extended Pricing Integration - Reports

Report Name	Module	Functionality
Import Pricing Errors report	Extended Pricing Integration	Prints a report on all errors and warnings encountered during a pricing import

Appendix C

About Trinity

Help >> About Microsoft Dynamics GP >> Additional >> About Trinity Suite

Use the About Trinity Suite window to check your registration information and installation details. The window shows you which Trinity modules you are registered to use and which have been installed on your system.

